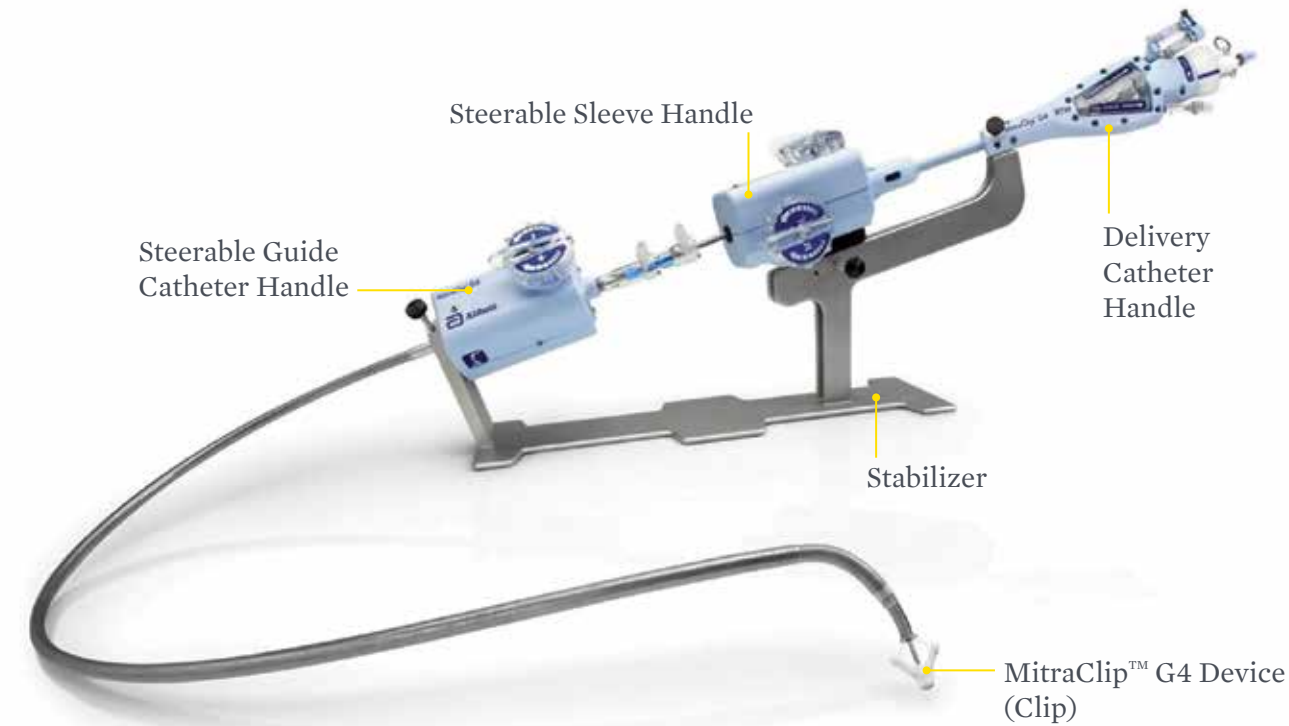
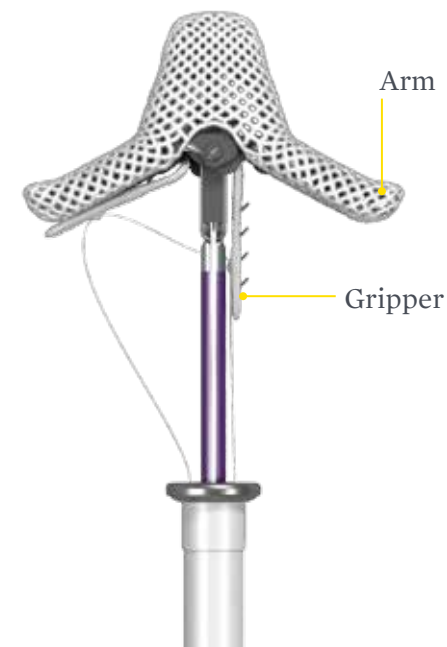


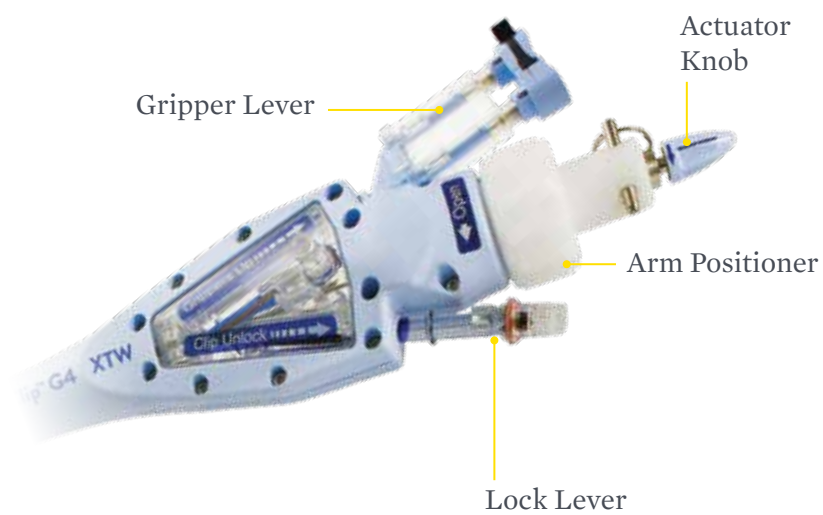
MitraClip™ G4 System



MITRACLIP™ G4 DEVICE CLOSE-UP



DELIVERY CATHETER HANDLE CLOSE-UP



CAUTION: These products are intended for use by or under the direction of a physician. Prior to use, reference the Instructions for Use, inside the product carton (when available) or at eifu.abbottvascular.com or at medical.abbott/manuals for more detailed information on Indications, Contraindications, Warnings, Precautions and Adverse Events.

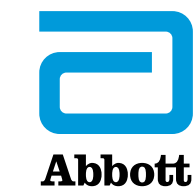
Information contained herein for **DISTRIBUTION outside of the U.S. ONLY**. Always check the regulatory status of the device in your region.

Illustrations are artist's representations only and should not be considered as engineering drawings or photographs. Photos on file at Abbott.

Abbott
3200 Lakeside Dr., Santa Clara, CA 95054 USA, Tel: 1.800.227.9902

™ Indicates a trademark of the Abbott Group of Companies.

www.cardiovascular.abbott
©2020 Abbott. All rights reserved. MAT-2005413 v1.0 | Item approved for Global OUS use only.

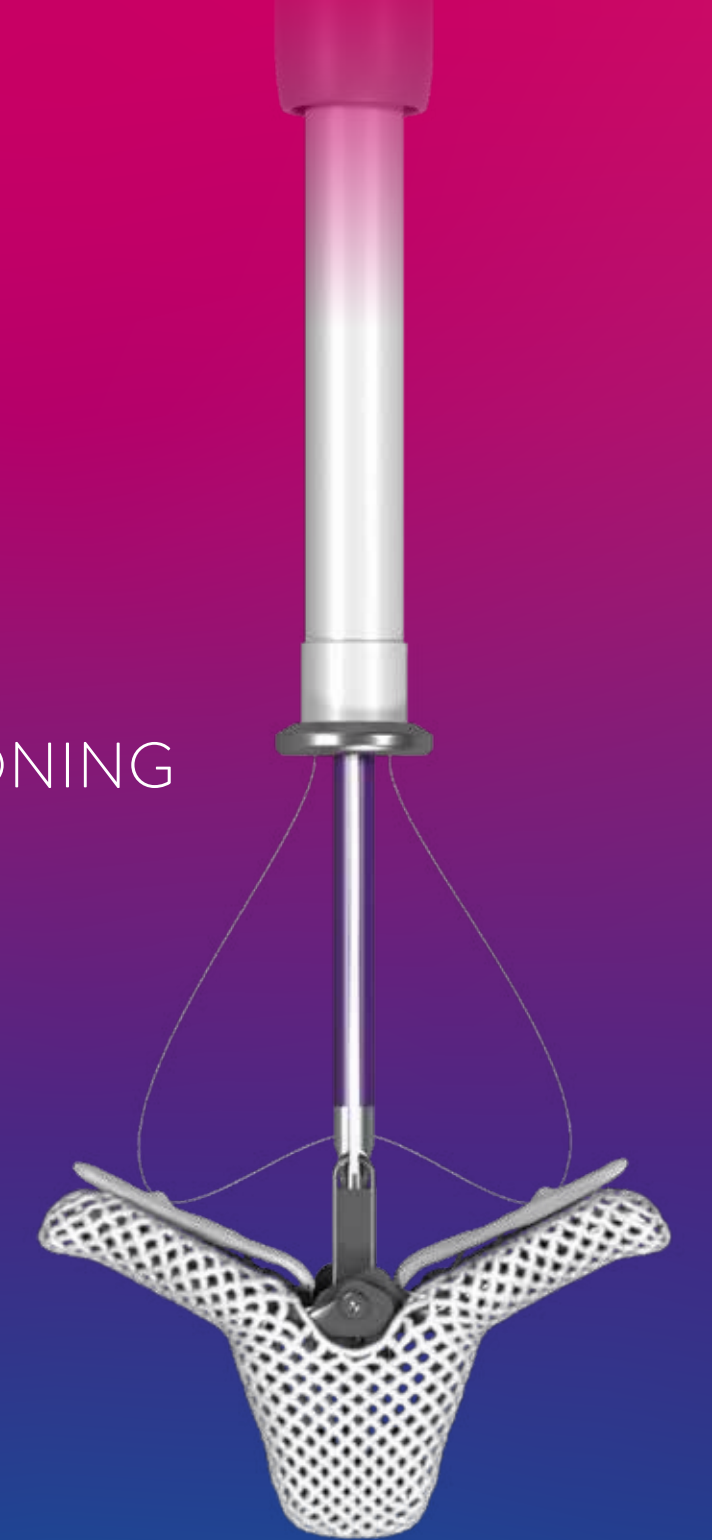
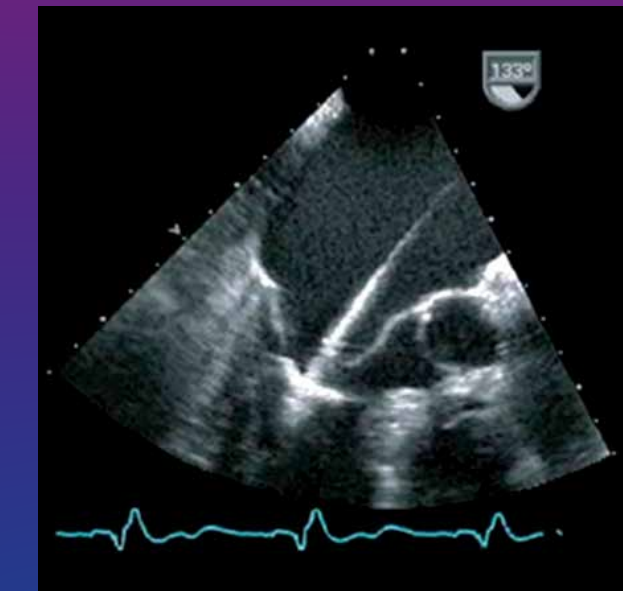


MitraClip™

Transcatheter Mitral Valve Repair

GUIDE

PROCEDURAL POSITIONING AND IMAGING



This material may be utilized for Clinical Site participants involved in Abbott sponsored trials or disclosed to a user facility for educational purposes.

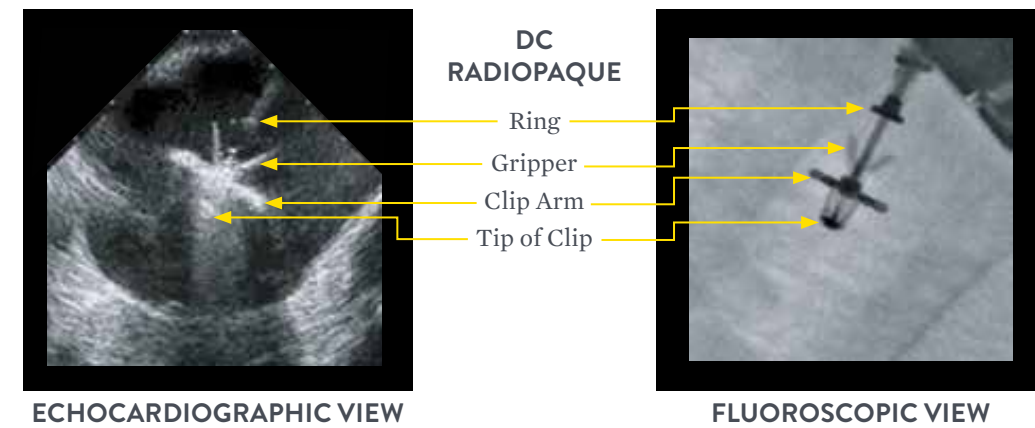
Information contained herein for **DISTRIBUTION outside of the U.S. ONLY**. Always check the regulatory status of the device in your region.

©2020 Abbott. All rights reserved. MAT-2005413 v1.0 | Item approved for Global OUS use only.

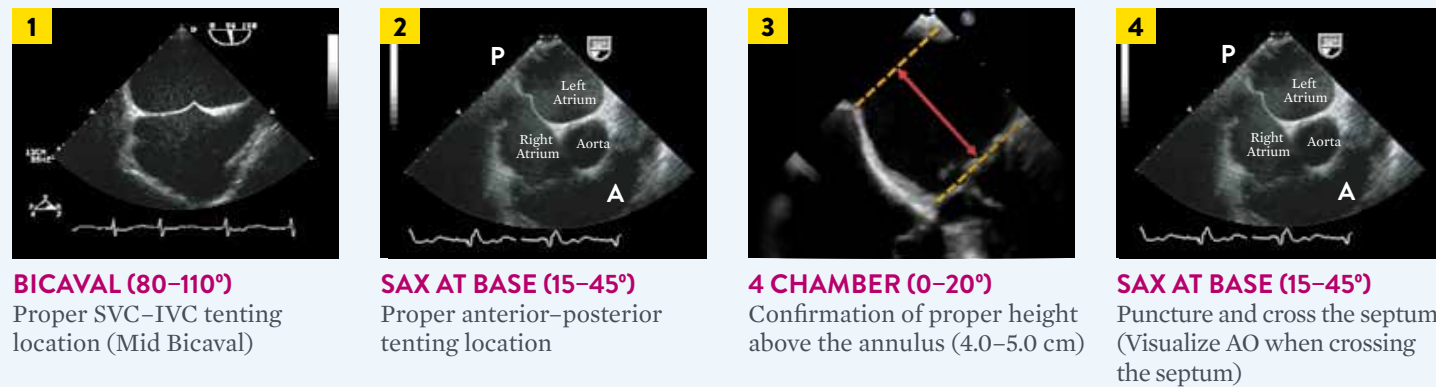


PROCEDURAL POSITIONING AND IMAGING GUIDE

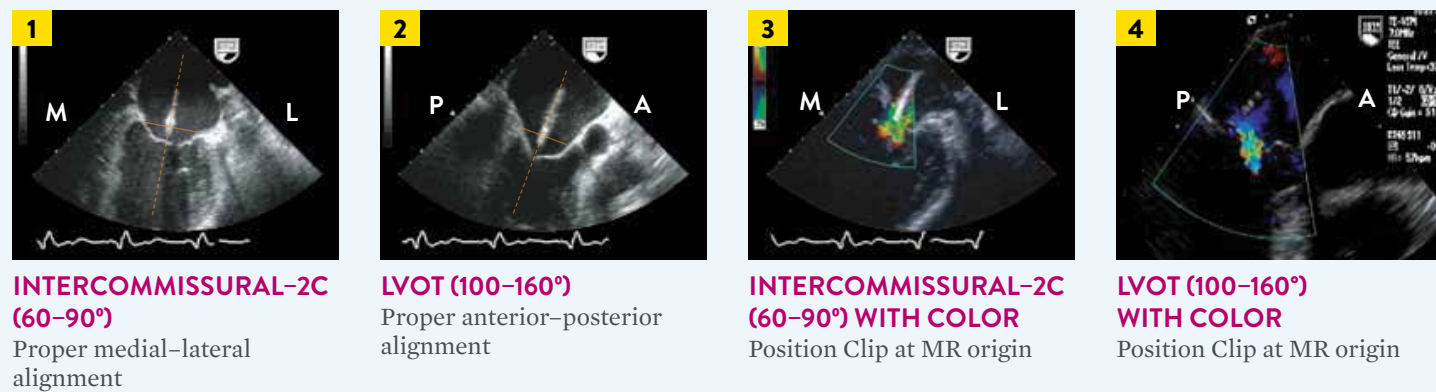
CLIP DELIVERY SYSTEM COMPONENTS



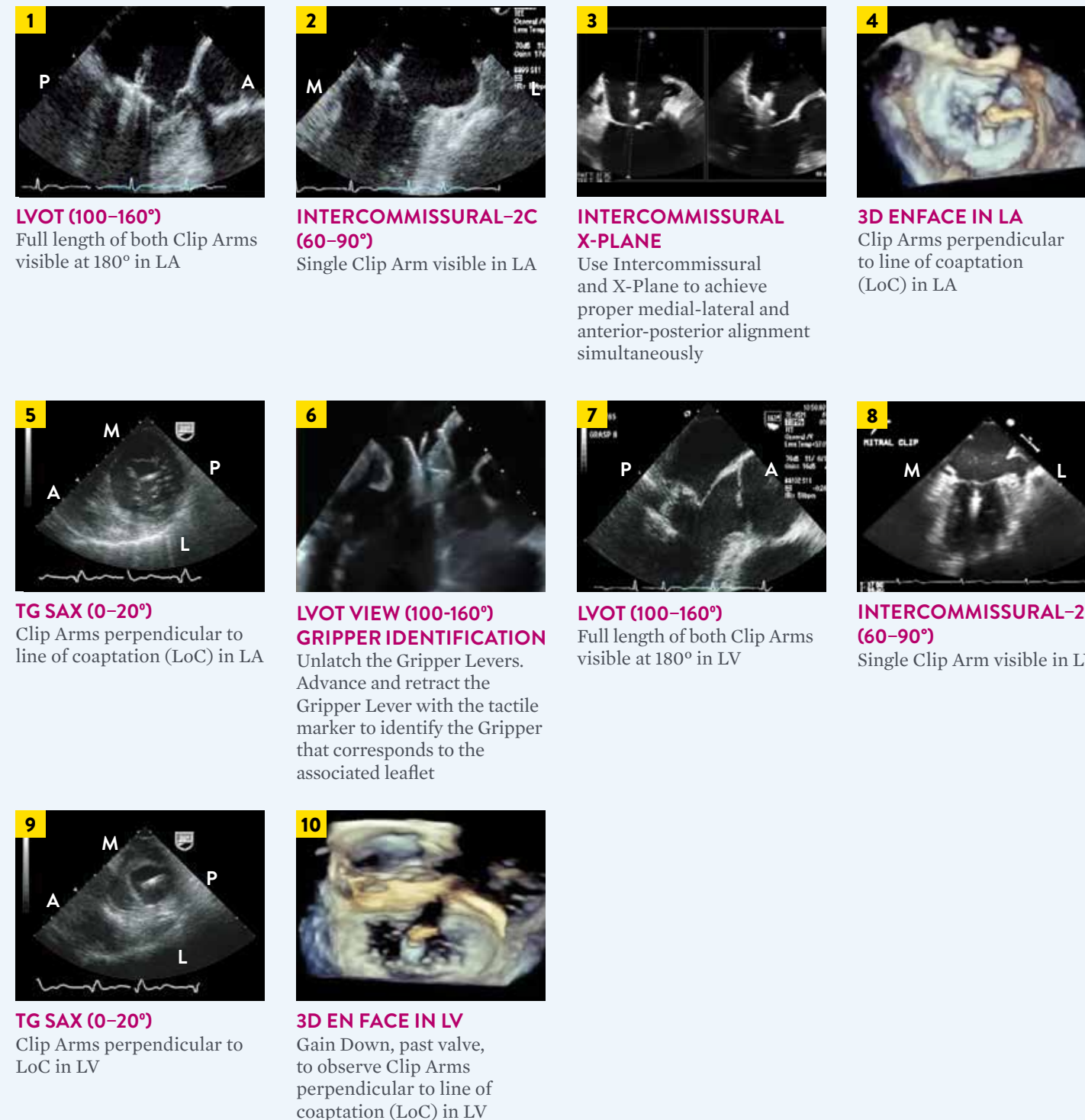
TRANSSEPTAL



POSITIONING AND TRAJECTORY



CLIP POSITIONING



LEAFLET INSERTION ASSESSMENT

